

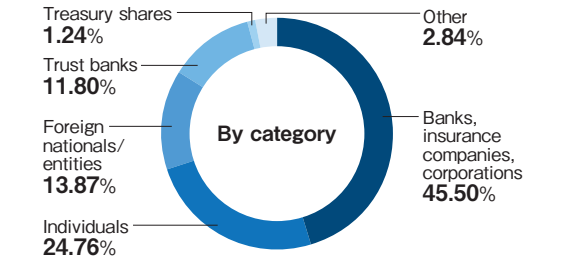
Information for Investors

Basic stock information

Fiscal year	April 1 to March 31 of the following year
Shareholders' record date for receiving year-end dividends	March 31
Shareholders' record date for receiving interim dividends	September 30
Ordinary General Meeting of Shareholders	Every June
Shareholders' register administration and special account management agent	Mitsubishi UFJ Trust and Banking Corporation
Contact point	Mitsubishi UFJ Trust and Banking Corporation Stock Transfer Agency PO Box 29, Shin-Tokyo Post Office, 137-8081 Phone: 0120-232-7111 (toll-free)
Stock exchange listing	Prime Market, Tokyo Stock Exchange

Status of shares (as of September 30, 2024)

Total number of shares authorized	100,000,000 shares
Total number of shares issued	43,931,260 shares (including 545,197 treasury shares)
Number of shareholders	19,748 (increase of 1,871 persons from the end of FY2023)

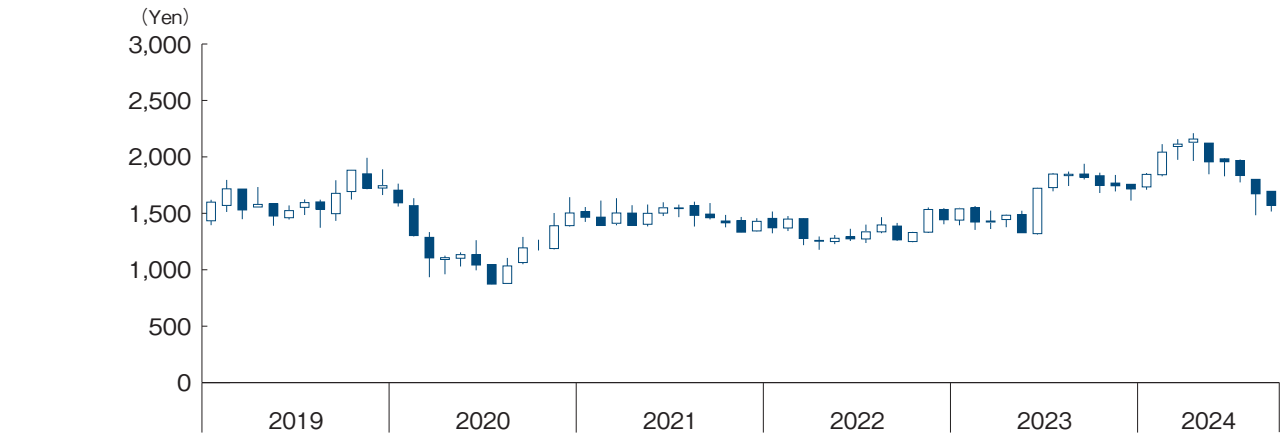


Major shareholders (top 10, honorifics omitted)

Name of shareholders	Number of shares held	Shareholding ratio (%)
Honda Motor Co., Ltd.	13,035,098	30.04
The Master Trust Bank of Japan, Ltd. (Trust Account)	3,148,300	7.26
KP K.K.	2,200,800	5.07
TK Holdings Inc.	2,194,344	5.06
Custody Bank of Japan, Ltd. (Trust Account)	1,530,891	3.53
Tomohiro Yoshida	1,317,800	3.04
Naohiro Takao	1,286,576	2.97
Toshitsugu Kikuchi	905,901	2.09
RE FUND 107-CLIENT AC	688,100	1.59
MUFG Bank, Ltd.	576,000	1.33

\*1. The shareholding ratio is calculated by deducting 545,197 shares of treasury shares.  
\*2. Treasury shares does not include 286,391 shares of the Company's stock held by Custody Bank of Japan, Ltd. (Trust Account) as performance-linked share-based remuneration for the Company's officers.

Stock price



Company Overview (as of September 30, 2024)

Company name	G-TEKT CORPORATION	Established	November 4, 1953
Founded	April 1, 1947	Share capital	¥4,656,227,715
President, Chief Executive Officer	Naohiro Takao		
Description of business	Manufacturing and sales of auto body components, transmission parts, stamping dies/weld equipment, etc.		

Sites

Japan	Overseas
<b>Head Office</b>	<b>Production</b>
<b>Engineering, R&amp;D, quality assurance</b>	Saitama Plant (manufacturing of auto body components)
G-TEKT Technical Center (engineering)	Hamura Office, Saitama Plant (manufacturing of auto body components)
G-TEKT TOKYO LAB (research and development)	Shiga Plant (manufacturing of auto body components/die design and production/welding facility design)
G-TEKT Quality Assurance Center (quality assurance)	Tochigi Plant (manufacturing of transmission parts/die design)
<b>Sales</b>	Gunma Plant (manufacturing of auto body components/die design and production)
C&C Tochigi (product development/sales)	

Overseas

North America	Europe
<b>United States</b>	<b>United Kingdom</b>
Jefferson Industries Corporation (manufacturing of auto body components)	G-TEKT Europe Manufacturing Ltd. (manufacturing of auto body components)
G-TEKT North America Corporation (research and sales)	G-TEKT Europe Manufacturing Ltd. (No. 2 Plant) (manufacturing of auto body components)
Jefferson Southern Corporation (manufacturing of auto body components)	G-TEKT Europe Manufacturing Ltd. (No. 3 Plant) (manufacturing of auto body components)
Austin Tri-Hawk Automotive, Inc. (manufacturing of auto body components)	G-TEKT Europe Manufacturing Ltd. (No. 4 Plant) (manufacturing of auto body components)
G-TEKT America Corporation (manufacturing of auto body components)	
<b>Canada</b>	
Jefferson Elora Corporation (manufacturing of auto body components)	
<b>Mexico</b>	
G-TEKT MEXICO CORP. S.A. DE C.V. (manufacturing of auto body components and transmission parts)	
G-ONE AUTO PARTS DE MEXICO, S.A. DE C.V. (manufacturing of auto body components)	
*Equity-method affiliates	
<b>South America</b>	
<b>Brazil</b>	
G-KT do Brasil Ltda. (manufacturing of auto body components)	
<b>Europe</b>	
<b>United Kingdom</b>	
G-TEKT Europe Manufacturing Ltd. (manufacturing of auto body components)	
G-TEKT Europe Manufacturing Ltd. (No. 2 Plant) (manufacturing of auto body components)	
G-TEKT Europe Manufacturing Ltd. (No. 3 Plant) (manufacturing of auto body components)	
G-TEKT Europe Manufacturing Ltd. (No. 4 Plant) (manufacturing of auto body components)	
<b>India</b>	
G-TEKT India Private Ltd. (manufacturing of auto body components)	
<b>Indonesia</b>	
PT.G-TEKT Indonesia Manufacturing (manufacturing of auto body components and transmission parts)	
<b>Asia</b>	
<b>Thailand</b>	
G-TEKT (Thailand) Co., Ltd. (manufacturing of auto body components and die production)	
G-TEKT Eastern Co., Ltd. (manufacturing of auto body components and die production)	
G-TEKT Eastern Co., Ltd. (No. 2 Plant) (manufacturing of auto body components)	
<b>China</b>	
Auto Parts Alliance (China) Ltd. (manufacturing of auto body components and die production)	
Auto Parts Alliance (China) Ltd. (No. 2 Plant) (manufacturing of auto body components and transmission parts)	
Wuhan Auto Parts Alliance Co., Ltd. (manufacturing of auto body components and die production)	
Conghua Auto Parts Alliance (China) Ltd. (manufacturing of small pressed parts for auto bodies)	
Guangzhou Nansha Auto Parts Alliance (China) Ltd (manufacturing of auto body components)	
G-TEKT (Shanghai) Technical & Trading Co., Ltd. (research and sales)	
<b>Slovakia</b>	
G-TEKT Slovakia, s.r.o. (manufacturing of auto body components)	
<b>Germany</b>	
G-TEKT (Deutschland) GmbH. (research and sales)	

Information on the website



IR information such as financial results and press releases can be found on the Company's website.

<https://www.g-tekt.jp/english/index.html>

