

Occupational Safety and Health

Safety and Health Policies

Since safety and health activities form the foundation of corporate management, we will aim to achieve a work place that we can be proud of by managing corporate activities in terms of safety and hygiene to minimize the impact on the safety and health of both the people working at G-TEKT and those of the local communities.

1. Efforts shall be made to further manage safety and health in compliance with the relevant safety and health laws and regulations, and internal standards.
2. The Company shall assess risks to define the danger factors in the workplace and determine the priority of relevant measures for the progression from an “accident-free” to a safe and comfortable “danger-free” workplace.
3. The Company shall establish communication, not only with all its employees, but also with the cooperating manufacturers and other parties concerned, in order to conduct safety and health-related activities with the participation of all parties.
4. The Company shall strive to raise awareness on safety through the education and training of its employees.
5. The Company shall appropriately allocate management resources to the execution of safety and health-related activities to ensure effective and continuous improvement.

TOPICS

Holding Security and Safety Seminars for Women

At the Shiga Plant, a security seminar was held for female employees as the first trial. We invited a lecturer from the Koka Police Station Community Safety Section, and 25 people participated. In addition to introduction of crimes that women are prone to be afflicted by and how to deal with them, the participants practiced and learned the art of self-defense.

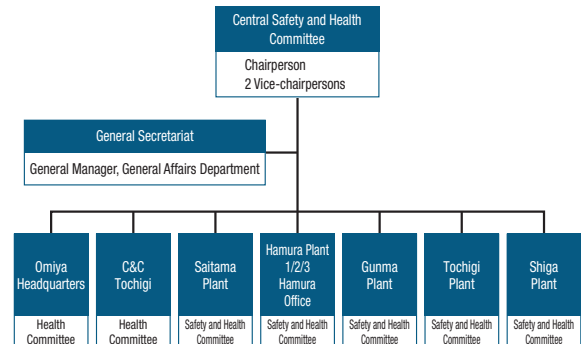


Security and safety seminars for women

We were able to hear from a lecturer of the Koka Police Station Community Safety Division about stalking, domestic violence and molester prevention techniques. In addition, we learned a few patterns of self-defense to dodge and escape from the attacker, as practical techniques that assume being attacked by a suspicious person. I hope to put the practical lessons to good use when it comes to a real emergency situation.

Noriko Yoshimura
Business Administration Division
General Affairs Department
Shiga General Affairs Section

●Organization Chart of Central Safety and Health Committee



The following efforts are being made centering on the Central Safety and Health Committee.

Evacuation Drills

In preparation for fires and large earthquakes, we regularly conduct evacuation drills at each of our business locations in order to raise awareness of fire and disaster prevention for injury prevention and the protection of our employees' lives (at least once a year).

Safe Driving Initiatives for Forklifts

At G-TEKT, we have introduced a unique in-house driving license system in which workers who have a certificate for completing the forklift operator training course are given an annual examination, in an effort to make them perform their tasks with more advanced skills and greater awareness of safe driving.

Employee Safety Training

We hold a “Safety Convention” each year in July to reflect on industrial, traffic and other accidents of the past, while concurrently seeking to raise awareness on achieving an accident-free and incident-free work environment.

In addition to the “Safety Convention”, we hold lectures on traffic safety and occupational safety (at least 30 times a year).

Traffic Safety Initiatives

In addition to an initiative for observing traffic rules during commuting and business trips, we also hold traffic safety classes for young employees before long-term holidays. Continuing from the previous fiscal year, the Hamura District received a certificate of appreciation from the Tokyo Metropolitan Police Department for having engaged proactively in traffic safety initiatives. In the Hamura District, to raise safety awareness, we have been offering the “Spring Traffic Safety Seminar” and the “Autumn Traffic Safety Seminar”.



Receiving a certificate of appreciation